

# 2025 School Planning Bridlewood School

learning | as unique | as every student



Calgary Board  
of Education

*dialogue)))*

[cbe.ab.ca/dialogue](https://cbe.ab.ca/dialogue)



# 2025 School Planning

- Welcome
- Agenda
  - Presentation
  - Q & A
  - Gather feedback
  - Meeting evaluation





# 2025 School Planning

The purpose of this meeting is to:

- Share information about school planning at Bridlewood School
- Gather feedback that may be considered in making future school planning decisions





**Calgary Board  
of Education**



# **School Planning and You**



[School Planning and You](#)





## How is Our School Development Plan Used?

- Guides ongoing assessment and review of goals and actions.
- Our school development plan is the driver for closing learning gaps and informs:
  - Instructional strategies
  - Professional learning
  - School structures and processes for learning
  - Resources to improve student learning
  - Data-informed decision making

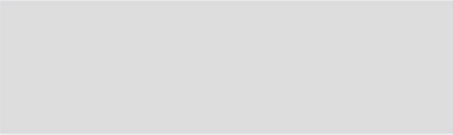


# School Development Plan – School Goals

## School Goals

- Student achievement in literacy will improve.
- Student sense of well-being will improve.

Goal(s) outline the overarching area(s) for improvement for the school. Goals are based on the data in the data story and describe both the direction and the outcome of the plan. A goal is intended to last over the entirety of the three-year plan



# School Development Plan – Outcomes

## Outcomes

- Student achievement in written expression will improve.
- Student ability to self-regulate and apply problem-solving skills will improve. (Described in the CASEL framework as [self awareness](#) / [self management](#)).

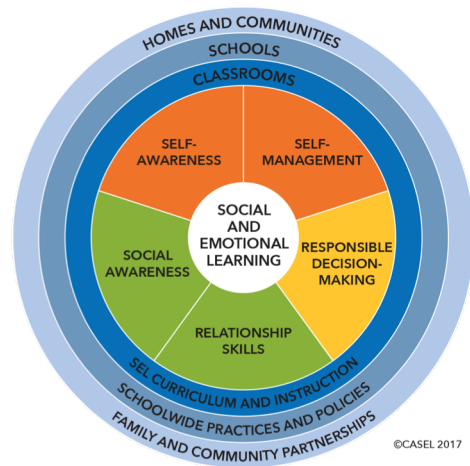


Outcomes are the priority areas of focus in relation to each goal. SDP outcomes reflect the desired state that the school wants to achieve through its actions and may be something that could be accomplished in one to three years.

# Self Management | CASEL Framework



- **Self-management: The abilities to manage one's emotions, thoughts, and behaviors effectively in different situations and to achieve goals and aspirations.**
- This includes the capacities to delay gratification, manage stress, and feel motivation and agency to accomplish personal and collective goals.



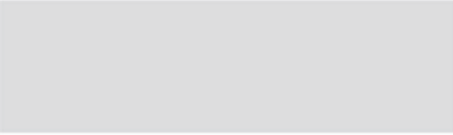
©CASEL 2017

# School Development Plan – Outcome Measures



- Student perceptions of having regulation strategies based on **CBE Student Survey** - (e.g. “I have strategies to help myself that I use if I feel stressed at school.”, “I take care of myself by making sure I don’t have too much screen time.”)
- Alberta Education Assurance Report (e.g. “Students at your school respect each other.”, “Students at your school follow the rules.”)
- Student voice through the OurSchool Well-Being survey percentage reporting positive self-regulation
- Increased teacher understanding of task design that incorporates SEL competencies in their disciplines for regulation and well-being





## School Development Plan – Outcome Measures

- AEAMs Survey (Education Quality measures)
- CBE Student Survey - Literacy
- Our School Survey
- ESL Proficiency Benchmarks
- CBE Report Card results ELAL (Writing Stem)
- Professional Learning data (impact of professional growth)





## School Development Plan – Data for Monitoring Progress

- Pre and post surveys for staff and students throughout year on the following,
- Professional Learning Implementation Plan
- Pre-post calibration of student writing samples and other related assessments.





## School Development Plan – Actions

Each outcome has supportive actions that reflect ever-evolving school contexts. A specific SDP action may continue from one school year to the next as these are connected to outcomes that may extend beyond one year. Actions are continually refined and adjustments made over the course of the three year plan.

# School Development Plan – Actions

**Outcome:** Student achievement in written expression will improve.

## Learning Excellence Actions

- Build reciprocal reading-writing connections
- Consistently use and reference mentor texts, writing exemplars, and success criteria resources to support students with writing self-assessments
- Utilize high-impact strategies to explicitly teach and support planning, idea development, organization, revision/edits
- Daily structured and supported writing times, where learners write for real purposes and audiences through strategies such as: loose parts, response journals
- Utilize consistent, specific and timely formative assessment practices to move student learning forward.



# School Development Plan – Actions

**Outcome:** Student achievement in written expression will improve.



## Well-Being Actions

- Provide feedback that moves learners forward.
- Create learning spaces that provide learners with a safe and respectful environment
- Activate students as owners of their own learning by engaging learners in goalsetting, self-assessment, and/or reflection
- Provide repeated opportunities for learners to practice and consolidate literacy skills and knowledge
- Use technologies intentionally and purposefully that support literacy practices and represent learning

# School Development Plan – Actions

**Outcome:** Student achievement in written expression will improve.



## Truth & Reconciliation, Diversity and Inclusion Actions

- Provide students with opportunities to interactively and collaboratively construct text(s).
- Empower students to have voice in learning, assessment, and decisions.
- Design student and staff learning tasks that intentionally activate the spirit, heart, body, and mind.



## School Development Plan – Actions

**Outcome:** Student ability to self-regulate and apply problem-solving skills will improve.

### Learning Excellence Actions

- Engage in reading and writing tasks to deepen students' understanding of the SEL competencies such as: reflection journals, regular opportunities for self-assessment with feedback, etc.
- Engage in oral language tasks, such as story-telling, to engage in the topic of regulation and how these skills impact student well-being and achievement in academic courses such as ELAL.
- Model acknowledgment of emotions as first step in problem solving.





# School Development Plan – Actions

**Outcome:** Student ability to self-regulate and apply problem-solving skills will improve.

## Well-Being Actions

- Use student well-being framework and companion guide to identify whole school well-being Tier 1 and Tier 2 continuum of supports.
- Provide explicit instruction of SEL Competencies (unifying approach through the CASEL Guide to Schoolwide SEL Implementation).
- Engage students in regular constructive feedback loops with their peers and adults (Social Awareness and Relationship Skills).
- Teach about the brain and its development/functions in response to stress and regulation techniques. (Self-Awareness and Self-Management).
- Provide direct instruction regarding the mental and physical health effects of extensive screen time.



## School Development Plan – Actions

**Outcome:** Student ability to self-regulate and apply problem-solving skills will improve.

### Truth & Reconciliation, Diversity and Inclusion Actions

- Utilize inclusive, universal strategies to intentionally integrate SEL competencies schoolwide.
- Implement restorative justice practices that prioritize dialogue, empathy, and accountability over punitive measures.



# Questions?



We'll take a few minutes to answer questions about our school development plan.



## Our School Budget

- Our school received \$3,190,759 in 2024-25 to provide a quality education to our students and meet the goals in our school development plan (SDP).
- At least 75 per cent of budgeted funds covers **staffing** and the remaining portion covers instructional and operational **supplies**.



# Our 2024-25 School Budget

- Our student enrolment for the current year is 508.

## RAM Allocations

Per School Total

\$530 437

Per Student Total

\$2 705 172

**Total RAM Allocations**

**\$3 235 609**

## RAM Deployment

### Scenario A

Organization

FTEs

Teachers

\$2,381,102

21.7

Support Staff

\$372 909

6.4

Administration

\$357 653

4.2

Total Staffing

\$3 111 665

32.2

Supplies/Other

\$123 944

**Total RAM Deployment Plans**

**\$3 235 609**



## Our 2024-25 School Fees

We will consult with families by outlining proposed activities for the upcoming year that may require a fee for cost recovery.

- Examples:
  - Some Field trips (e.g. Outdoor School, Orff)
  - In-school activities (e.g. clubs)





# Our 2024-25 School Fees

- [Guide to 2024-25 School Fees](#)





# Our 2024-25 School Fees

- [2023-24 Report to Parents on Fees](#)





## Questions?

We'll take a few minutes to answer questions about our school budget and fees.



*dialogue)))*

# Gathering Your Feedback



Feedback is important as we consider school planning. When students, families and staff work closely together, students achieve greater success in their learning.

We'd now like to gather your feedback on some specific questions.



# Gathering Your Feedback

## School Development Plan (SDP)

We share SDP information and updates in different ways. In what ways have you learned about our SDP?

- School website
- School council meeting
- SchoolMessenger
- Other



# Gathering Your Feedback



## School Development Plan (SDP)

The SDP is developed with all students in mind. Do you agree that:

- Your child's learning can benefit from the goal(s), outcome(s), actions and resources in the SDP?
- The learning of all students is reflected and prioritized in the goal(s), outcome(s), actions and resources in the SDP?





# Gathering Your Feedback



## School Budget & Fees

Schools must operate within their budget and too many fees can be unmanageable for families. Knowing that, what activities and services are most important to you?



# Gathering Your Feedback



## School Budget & Fees

Do you agree that:

- The activities our school provides (e.g., field trips, guest speakers, experts in schools, sporting activities, outdoor education, etc.) are important for your child's learning?
- The school fees you pay are reasonable considering the benefit they provide your child?



# Gathering Your Feedback

- Survey will remain open until March 31, 2025.





## Next Steps

- We will update our school website with:
  - A summary of feedback gathered at tonight's session by April 28, 2025
  - A meeting evaluation summary by April 28, 2025
  - Feedback from the survey by April 28, 2025

Share information about student results and the school development plan at our October 2025 school council meeting.

- Our updated school development plan will be posted on our school website by Nov. 30, 2025.



## Wrap-Up

- Thank you for your participation!
- Please take a few minutes at this time to share your feedback about this meeting.
- [Meeting Evaluation](#)







*dialogue)))*

There can be no dialogue without you.